

Evertz Microsystems Inc

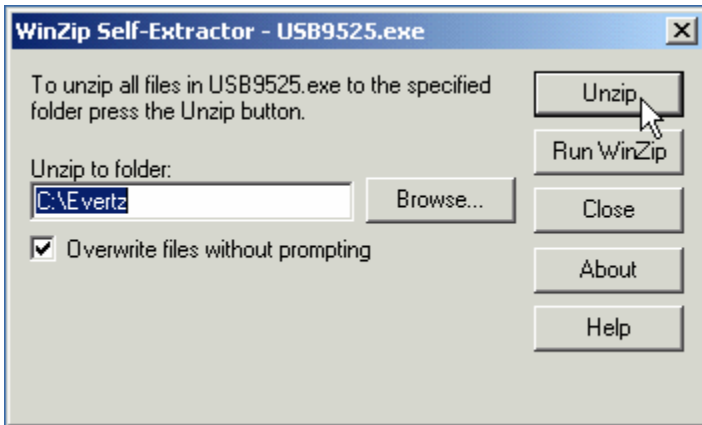
USB Drivers for Evertz Logo Inserter Model's HD9525LG, SD9525LG

Release Date 12/4/2002

Pre-Installation Steps

The USB Driver installation described in this document assumes Windows 2000 or Windows XP and Evertz logo-inserter software (Versions 2.6.2 to 3.1.1) have been installed. You should also have local administrator access from you sign-in (if you do not have this access to your pc please ask your pc administrator).

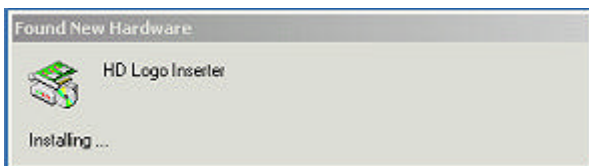
First step is to download the driver executable USB9525.exe and unpack the USB driver files.



By default the files are unzipped to the C:\Evertz folder, the installation examples that follow assume this location. If you unzip the files to another folder substitute that folder's path where you see C:\Evertz in the following examples.

Now make sure the logo inserter hardware is powered. Connect a usb cable from your pc or hub to the usb connector found on the rear panel of the logo inserter.

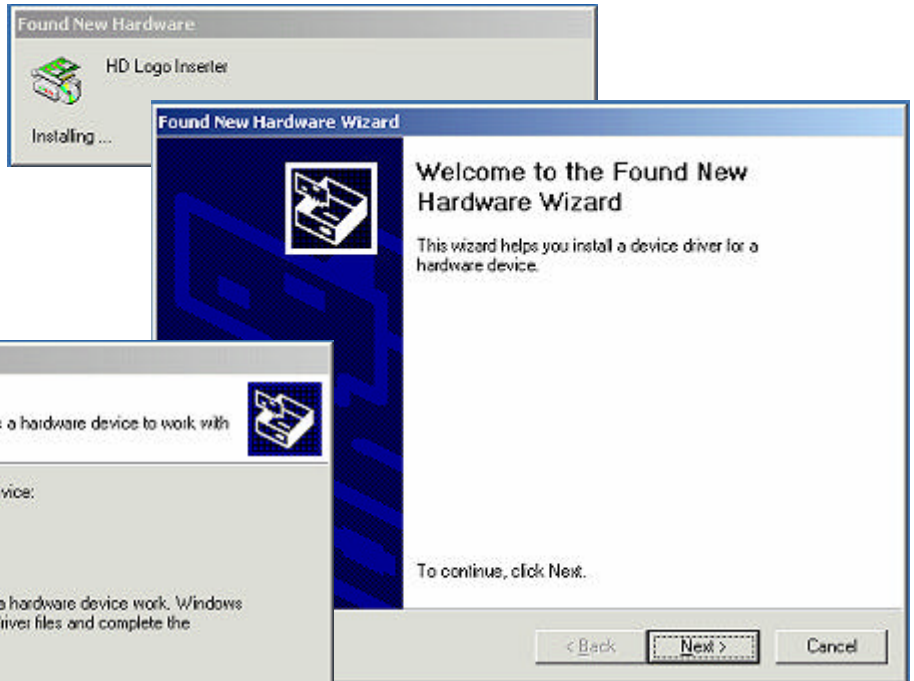
When your pc is running and you are logged in you will see the new hardware dialog.



The installation only requires you to tell the system where the folder is where you unzipped the driver files. This is accomplished by choosing the **specify location** when given the options and selecting the **Browse...** button. Navigate to the C:\Evertz folder or your unzip location. The following pages provide examples for both Windows 2000 and Windows XP installation. The final step is to verify a successful installation by running instalogo software and checking the options menu for the USB entry. The button **Send to Inserter** will send logos by the fastest method that is checked on the option menu.

Windows 2000 (Example)

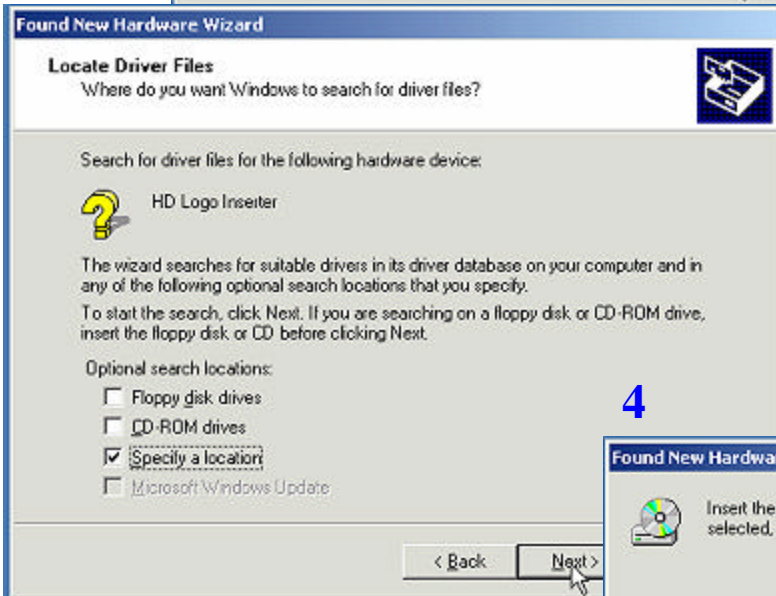
1



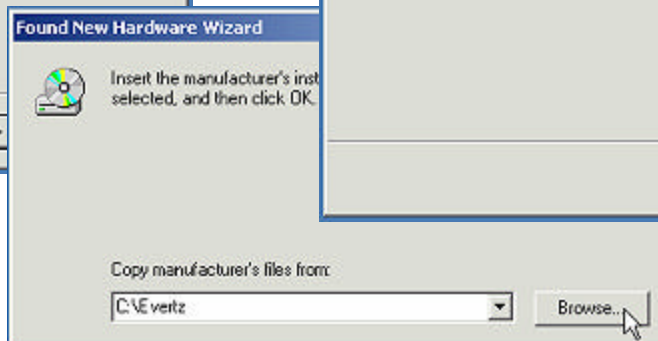
2



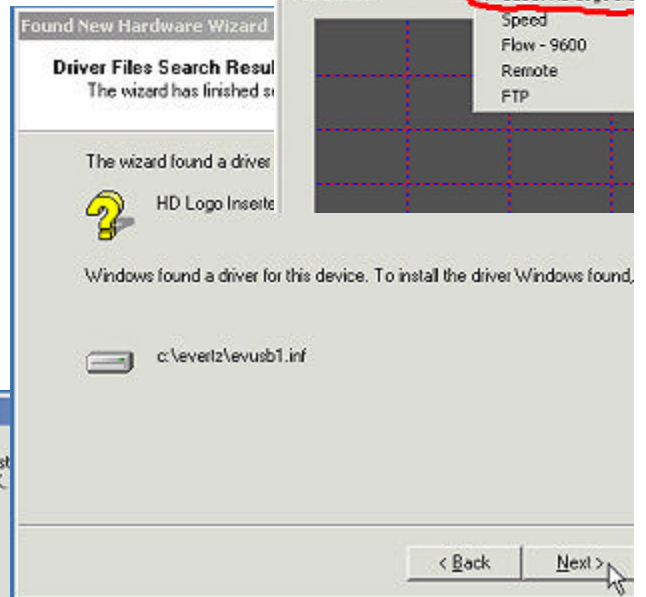
3



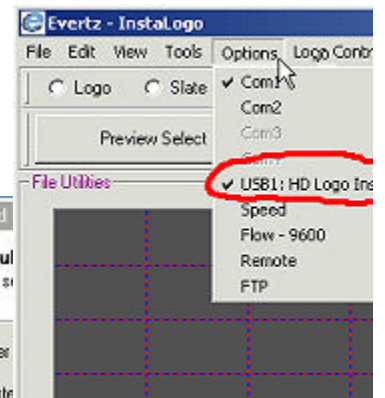
4



5



6

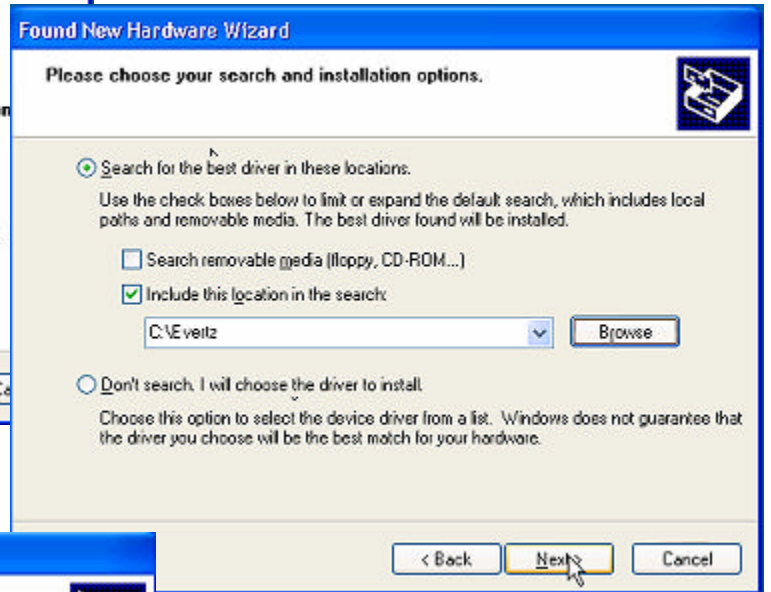


Windows XP (Example)

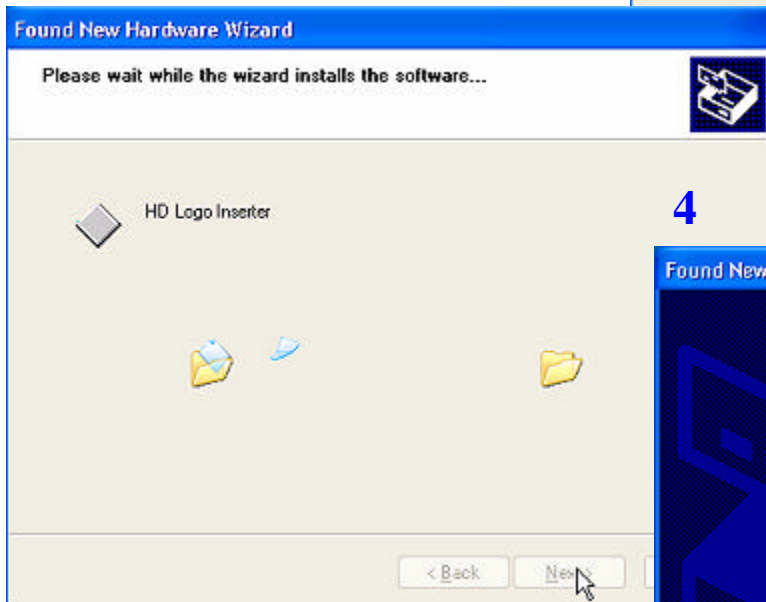
1



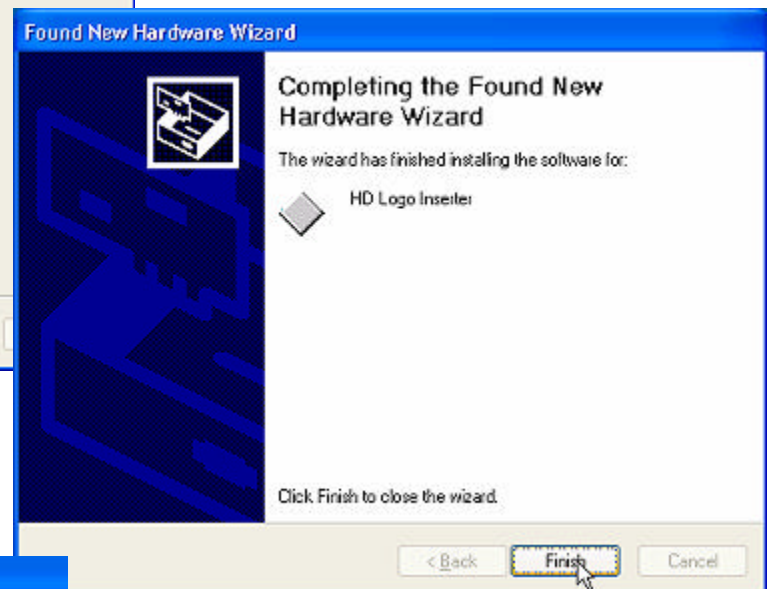
2



3



4



5

