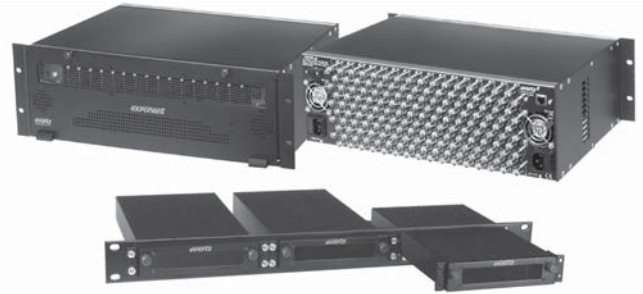


500FR, S501FR

Compact High Density Distribution Frame



The Evertz 500FR Compact Distribution Frame is an ideal solution for today's vast digital video distribution requirements. It handles the high-speed requirements of HDTV as well as Analog and SDTV signals. The frame design allows extraction of modules from the front without compromising performance even at 1.5Gb/s. The 500FR Compact Distribution Frame is a 3RU frame designed to house up to 16 single slot modules.



Note: The image shows 3 of the S501FR standalone Compact High Density Distribution Frames mounted into the S501FR-RP Rackmount panel S501FR

Specifications

Electrical (500FR):		Electrical (S501FR):		Physical (S501FR):	
AC Mains Input:	Auto ranging, 100 to 240V AC, 50/60Hz	Voltage:	12V DC Nominal Auto ranging, 100 to 240V AC power adapter	Dimensions:	4.9"W x 1.2"H x 10.5"D (124mm W x 30mm H x 267mm D)
Max. Operating Current:	2.6 A (@ 120V AC), 1.4 A (@ 240V AC)	Power Consumption:	10W max	Module Capacity:	1 single slot
Max. Power Consumption:	200W	Fuse:	Internal self resetting fuse	Weight:	1lb (.45kg)
Max. Module Load:	160W (10W per slot)	Connector:	2.5mm DC power jack	Certification:	
Power Supply Configuration:	Dual, redundant, separate AC inlets	Physical (500FR):		Safety:	CSA Listed (500FR) Power adapter CSA listed (S501FR) Complies with CE Safety Directive
Connector:	IEC 60320 - 1 per power supply	Height:	5.25" H x 19" W x 9.5" D (133mmH x 483mmW x 368mmD)	EMC:	Complies with FCC part 15, Class A EU EMC Directive
Fuses:	4 amp, 250V time delay 5x20 mm. - 2 per power supply	Module Capacity:	16 slots	Signal Connections:	BNC Per IEC 61169-8 Annex A (10 per slot)
Safety:	CSA Listed Complies with CE Low voltage Directive	Weight:	Approx. 17lbs (7.7kg) with 2 power supplies, no slots occupied Approx. 32lbs (14.5kg) with 2 power supplies all slots occupied	Status Indicators:	PSU status LED, Local Error/Failure LED
EMC:	Complies with FCC part 15, class A Complies with EU EMC directive			Tally Output Connector:	4-pin terminal, relay N/O, N/C for status/fault alarm 2A, 125V DC max 0-40°C optimal performance 0-50°C operating
				Temperature:	

Ordering Information

500FR	Compact High Density Distribution Frame	S501FR	Standalone Compact High Density Distribution Frame
Ordering Options		Accessories	
+5PS	Redundant power supply	VSHEG42-120300-7	Spare/additional power supply for S501FR
Accessories		S501FR-RP	Rackmount panel mounts three S501FR enclosures in a 1RU rack space (Includes two blank panels for unfilled slots)
500PS	Additional power supply for 500FR		

An Industry Comparison

Based on 6RU of Rack Space

Evertz *exponent* DA Frame
Total Number of Output BNCs per 6RU = **288**

Most Dense Available

Competitor's DA Frame
Total Number of Output BNCs per 6RU = 240-270

Notes:

- exponent** achieves the highest density with 288 BNC outputs (per 6RU)
- exponent** uses less power supplies thus less points of failure (per 6RU)

- exponent** provides a direct connection to an SNMP network. Some competitive pseudo SNMP solutions require intermediate application servers or protocol translators which add latency, single point of failure issues, cost, and complexity.